

About Us:

Reinforcing & Mesh Solutions (RMS) was founded in 2002. Since our inception we have become one of South Africa's leading supplier of reinforcing steel bars (rebar) and welded mesh. We're committed to building a stronger nation through supplying the construction industry with quality steel reinforcing products. RMS has a proud track record of innovation with a focus on consistent quality and safety. This means that our products will exceed your expectations and deliver exceptional structural and social outcomes. Our nationwide network of branches means that you are never far from the ideal reinforcing solution. Let's create solutions together and create a stronger nation.

Our Services:

Reinforcing and Mesh Solutions provides cut & bend reinforcing steel, welded wire mesh, fixing, reinforcing stock lengths, with added sundry products such as plastic chair spacers, binding wire, hard drawn wire, brick-force, green plastic, and couplers.

Why we joined Leads 2 Business:

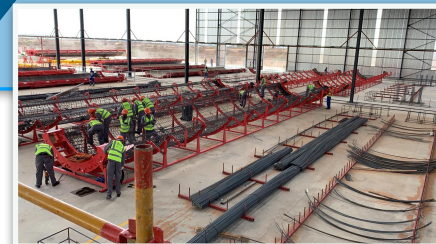
We were drawn by the fact that L2B provides a portal to new contracts daily, weekly and monthly. This market segment information has allowed us to acquire more accurate information about the current markets. The feature that really stands out for us is the dashboard where we keep track of live tenders, projects and a directory of client contacts.

How We Use L2B for our business :

L2B gives us information on upcoming/ potential leads to new projects as well as the latest information on our current projects.

Favourite thing about the construction industry:

Knowing that we are the hidden strength in various structures through-out South Africa. We're reinforcing communities and helping people build better lives and livelihoods



CONTACT DETAILS:

WEBSITE:

www.rms-sa.co.za

FIND US:

30 North Reef Road,
Elandsfontein, Germiston,
1400
P.O. Box 6596 Homestead,
1412

LET'S TALK:

+2711 878 6820

JOIN THE CONVERSATION:

LinkedIn – RMS - Reinforcing
and Mesh Solutions

Facebook - @rms-sa

Instagram -
@reinforcingandmeshsolutions

